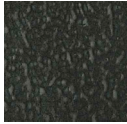


CONTROL ERGONOMICS

I N T E R N A T I O N A L

2013 Standard Color Palette

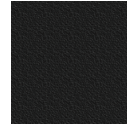
STEEL FINISH-POWDER COATINGS



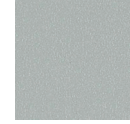
E311-BK04
BLACK HAMMER
LOW GLOSS



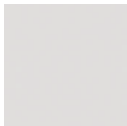
C241-GR07
GRANITE FINE TEXTURE
SEMI-GLOSS



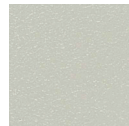
C241-GR484
DARK GRAY FINE TEXTURE
SEMI-GLOSS



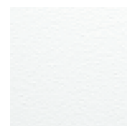
T243-GR522
FLINT GRAY FINE TEXTURE
SEMI-GLOSS



T243-GR301
QUARTZ GRAY FINE TEXTURE
SEMI-GLOSS



T032-BG03
BEIGE TEXTURE
SEMI-GLOSS



C031-WH120
WHITE TEXTURE
SEMI-GLOSS



H305-GR10
LT GUNMETAL GRAY
SMOOTH

Notes: We primarily use Cardinal Industrial Finishes as our supplier of powder coatings.

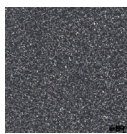
Smooth, non-textured coatings should not be specified for consoles and technical furniture lines.

Cabinet orders of less than 10 using colors other than Black Hammer or Quartz Gray will incur a paint fee. Call Customer Service for details.

DECORATIVE LAMINATE COLORS



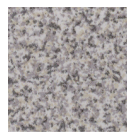
FOLKSTONE
FORMICA 927



STELLAR
FORMICA 689



COCOA MAPLE
FORMICA 7739M



STONE GRAPHIX
FORMICA 503



COLORADO SLATE
FORMICA 7014-58



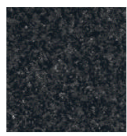
FOG DUST
FORMICA 1816M



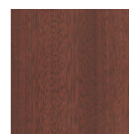
BLACK
FORMICA 909



FOLKSTONE
CELESTA
FORMICA 692



*BLACKSTONE
FORMICA 271-42



VICTORIAN
MAHOGANY
FORMICA 7583M



GRAPHITE GRAPHIX
FORMICA 515



BLOSSOM
CHERRYWOOD
FORMICA 758



LACEWOOD
FORMICA 744



AMBER MAPLE
FORMICA 7012

The colors on this chart are e-Systems Group standard colors. Colors depicted here may vary from actual physical sample. Please contact your e-Systems Group representative for steel and laminate chips.

Part #: COLOR-02
11.06.12

*Standard cost, longer lead time.

We are authorized suppliers of several industry-leading laminate manufacturers, and can supply nearly any laminate an end-user might specify. Please contact your e-Systems Group representative for pricing and suitability of custom laminate options.